

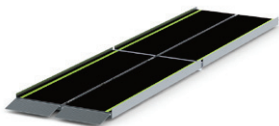
EXAMPLES OF ASSISTIVE TECHNOLOGY



Wheelchair



Speech Communication
Device



Portable Ramp



Electronic Magnifier



Visual Alert System



Braille Printer

An AT device may be as simple as an easy grip kitchen utensil or as complicated as a sophisticated voice recognition computer.

AT devices and services may enable children and adults with disabilities to work, play, communicate, attend school, learn, move about, and be independent within the community.

Call or Visit GSAT!

Leah Abelon
GSAT Center Coordinator

Shawni Acfalle
AT Center Assistant

University of Guam
Guam CEDDERS
Office of Graduate Studies,
Sponsored Programs, & Research
303 University Drive
UOG Station
Mangilao, GU 96913
(V) Phone: 735-2490/1
TDD: 735-2491 | Fax: 734-8378
Email: gsat@guamcedders.org
Website: www.gsatcedders.org



This brochure was produced with funding from the U.S. Department of Health and Human Services, Administration on Community Living. Grant # 1701GUSGAT
The University of Guam is an Equal Opportunity Employer and Provider.

Updated May 30, 2018



Enhancing Your Quality of Life Through Assistive Technology





What is GSAT?

GSAT is a program funded by the Assistive Technology Act of 2004.

This federal grant is administered by the University of Guam Center for Excellence in Developmental Disabilities Education, Research and Service (CEDDERS).



Mission

GSAT's mission is to enhance the independence, productivity and quality of life for all Guam residents through increased access and acquisition of assistive technology (AT) devices and services.

What is Assistive Technology?

"...An **assistive technology (AT) device** is any item, piece of equipment or product system, whether acquired commercially off the shelf, modified, or customized, that is used to increase, assist, maintain, or improve the functional capabilities of individuals with disabilities."

Assistive Technology services are any services that directly assist an individual with a disability in the selection, acquisition, or use of an AT device." (P.L. 108-364, Sec. 3, 2004.)

Services/Programs

GSAT Demonstration & Resource Center

GSAT provides information on assistive technology, opportunities for "guided exploration," and assistance in making an informed decision about the best AT to meet one's needs. Device demonstrations are available for free to people with disabilities and their families, providers of education, health and related services, and faculty responsible for teaching tomorrow's providers.

30-Day Device Loans

GSAT's AT Lending Library is a free service that loans assistive technology devices for a 30-day period. Devices may be taken home, to school, or even to the work place, so individuals with disabilities can decide for themselves how helpful a device is before committing to a purchase. These device loans may also provide short term accommodations for temporary injuries.

AT Recycling & Equipment Exchange

The Guam Recycling & Equipment Exchange Service (GREES) is a free online and call-in system that may be a source for "previously-owned" assistive devices, usually available at a lower cost than buying new. It is available to people with disabilities, their families, friends, and service providers, who want to find, buy, sell, or donate previously owned assistive technology. GREES helps get used assistive technology devices such as wheelchairs, walkers, lifts, portable ramps, and other devices into the hands of people with disabilities who need them.

Akudi: Alternative Funding Programs



The Akudi Program is a loan program specifically for assistive technology devices and services. Akudi loans provide a unique funding alternative for individuals with disabilities who have no other options, who are seeking to establish credit, or who may be seeking to rebuild a negative credit history.

Akudi loans can be used to buy assistive technology devices and services. Assistive technology is often specialized to the needs of the individual. The Akudi Program can assist in directing folks to the right providers to help determine the right device. Assistive Technology devices and services may include:

- Wheelchairs/Scooters
- Hearing & Vision Aids
- Communication Devices
- Computers, computer software, and accessories
- Accessible Vehicles & Vehicle Modifications
- Home Modifications to Increase Accessibility
- Prosthetics and Orthotics
- Assistive Technology Training and Device Repair
- And More...

The Akudi Program also offers loans to individuals on Guam with disabilities who want to start their own businesses or expand an existing business and need funding for equipment, supplies, and inventory.